

September 27, 2012

Michigan Department of Treasury  
Office of Revenue and Tax Analysis  
PO Box 30722  
Lansing MI 48909

**RE: Compliance Form 4886 for City of South Lyon, MI Transparency & Accountability**

The City of South Lyon is pleased to submit form 4886 with the required documents per Public Act 200, in compliance with the State of Michigan's Economic Vitality Incentive Program (EVIP).

The City of South Lyon has chosen to use a web-service for this requirement, and has partnered with Munetrix to showcase our data.

**Included with this letter are the required documents for City of South Lyon's:**

- **Citizens Guide Including:**
  - Most recent year end, current budget and 1-year forecast with assumptions
  - Summary of debt, pension and OPEB liabilities
- **Performance Dashboard**
  - Customized per our discretion

We have made the data available to the public via a link on our website; as well we will make available limited quantities of paper copies in our municipality lobby. You will find the confirmation of our website link and various supporting transparency documentation included with this letter.

We look forward to receiving these important EVIP funds from the State of Michigan and trust you will contact us if there are any questions or concerns.

Sincerely,

David M. Murphy  
City Manager

## Economic Vitality Incentive Program/County Incentive Program Certification of Accountability and Transparency

Issued under authority of 2012 Public Act 200. Filing is mandatory to qualify for payments.

Each city/village/township/county applying for Accountability and Transparency payments must:

1. Certify to the Michigan Department of Treasury (Treasury) that the local unit listed below has produced and made readily available to the public, a citizen's guide, a performance dashboard, and a projected budget report as required by 2012 Public Act 200. The citizen's guide, performance dashboard, and projected budget report shall be made available for public viewing in the clerk's office or posted on a publicly accessible Internet site.
2. Submit to Treasury a citizen's guide, a performance dashboard, and a projected budget report.

**City/village/township:** This certification, along with a citizen's guide, a performance dashboard, and a projected budget report, **must be received by October 1, 2012** to receive the October and December payments or on or before November 30, 2012 to receive the December payment. Post mark dates will not be considered. For questions, call (517) 373-2697.

**County:** This certification, along with a citizen's guide, a performance dashboard, and a projected budget report, **must be received by October 1, 2012** (or the first day of a payment month) in order to qualify for that month's payment. Post mark dates will not be considered. For questions, call (517) 373-2697.

PART 1: LOCAL UNIT INFORMATION		
Local Unit Name City of South Lyon	Local Unit County Name Oakland County	
Local Unit Code 221063	Contact E-Mail Address dmurphy@southlyonmi.org	
Contact Name David M. Murphy	Contact Title City Manager	Contact Telephone Number (248) 437-1735
Website Address, if reports are available online		
PART 2: CERTIFICATION		
<i>In accordance with 2012 Public Act 200, the undersigned hereby certifies to Treasury that the above mentioned local unit has produced a citizen's guide, a performance dashboard, and a projected budget report and has made them available for public viewing in the city, village, township, or county clerk's office or has posted them on a publicly accessible Internet site. The citizen's guide, performance dashboard, and projected budget report are attached to this signed certification.</i>		
Chief Administrative Officer Signature (as defined in MCL 141.422b)	Printed Name of Chief Administrative Officer (as defined in MCL 141.422b) David M. Murphy	
Title City Manager	Date September 27, 2012	

Completed and signed form (including required attachments) should be e-mailed to: **TreasRevenueSharing@michigan.gov**

If you are unable to submit via e-mail, mail the completed form and required attachments to:

Michigan Department of Treasury  
Office of Revenue and Tax Analysis  
PO Box 30722  
Lansing MI 48909

TREASURY USE ONLY		
EVIP/CIP Y N	Certification Received	EVIP/CIP Notes
Final Certification	Dashboard Received	
	Citizens Guide Received	
	Projected Budget Report Received	



# City of South Lyon



- Home
- Community
- Government
- City Departments
- Document Center
- Calendar
- Events
- Employment
- FAQ
- Links
- Contact Us
- Site Map

Welcome to the Official Website of the City of South Lyon, Michigan

[Printer Friendly](#) [Email to a Friend](#) [Bookmark & Share](#)

**LATEST NEWS & EVENTS:**

**MARK YOUR CALENDARS! PUMPKINFEST WEEKEND IS SEPTEMBER 29 & 30!**



PUMPKINFEST is coming early this year! The annual family event will be held **Saturday, September 29th and Sunday, September 30th.**

For complete details and a schedule of activities for this year's Pumpkinfest, visit their website: [www.southlyonpumpkinfest.com](http://www.southlyonpumpkinfest.com)

**SOUTH LYON FIRE DEPARTMENT TO HOST OPEN HOUSE**



On **Sunday, September 30th** (Pumpkinfest Weekend) the South Lyon Fire Department is hosting an open house at the Fire Station 217 Whipple Street. The Open House will run from **10:00 a.m. until 2:00 p.m.**

- Meet your local firefighters
- Learn about fire and fire safety
- Tour the fire station
- Watch live demonstrations
- FREE ADMISSION

**2012 Summer Tax Bills**



The 2012 Summer Tax Bills will be mailed by Oakland County July 1st. Tax payments are **due in our office by 5:00 p.m.** on the last business day of September, this year that date falls on **Friday, September 28th, 2012.** Post marks will not be honored. Any payment received on the following Monday will be considered delinquent and a 3.5% penalty of will be applied.

If using the drop box in the driveway at City Hall, the payment must be deposited in the box before **4:00 p.m.** on Friday, September 28th. Please do not leave cash payment in the dropbox.

Payments can be made by cash (in our office) or by check/money order. Please make checks payable to City of South Lyon.

For a fee, tax payments can be made online directly to Oakland County at [www.oakgov.com](http://www.oakgov.com)

**COMMUNITY RECREATION CENTER INTEREST SURVEY**



**South Lyon Area Recreation Authority**

The purpose of this survey is to determine community interest in an indoor/outdoor community recreation center. This community recreation center could service the areas of South Lyon, Lyon Township and parts of Green Oak Township within the South Lyon School District. A separate community recreation center could provide the community with additional space for community and recreational activities, greater flexibility to schedule activities, the ability to host activities at a variety of times, and the ability to host a wider variety of activities in

South Lyon, MI

64°F  
Cloudy

[Hour-by-hour](#) | [10-day](#)

The Weather Channel  
www.weather.com

Enter city or U.S.zip

**Quick Links**



- [2012-2013 Budget](#)
- [2011 Audit](#)
- [Munetrix Dashboard](#)
- [EVIP Phase 3](#)
- [Available Properties](#)
- [Pay Taxes](#)
- [Minutes/Agendas](#)
- [City Charter](#)
- [City Code](#)
- [DDA](#)
- [Garbage Pickup](#)
- [Recycling](#)
- [Pumpkinfest](#)
- [Rail Trail](#)

**Community Video**



- Welcome
- Education
- Quality of Life
- Real Estate & Relocation
- Chamber of Commerce
- Downtown

one facility.

Weblink: <https://www.surveymonkey.com/s/SLACOMMCTR>

Please take a few minutes to fill out this survey.

Your opinion is important!

### 2012 Farmers Market



**Fresh Produce, Festive Music & Delicious Fare**

#### Vendor & Sponsorship Information

[2012 Vendor Application](#) (PDF)

[2012 Sponsorship Package](#) (PDF)

#### About the Market

**Who:** You, and all of your friends, family and neighbors!

**When:** Wednesdays (May 23 - October 10) from 2 - 7 p.m.

**Where:** Downtown South Lyon (municipal lot at the corner of Pontiac Trail and Liberty Street)

**What:** The market will feature a variety of produce, plants, flowers and some handmade crafts from local artisans. In the meantime, if you have questions please contact Market Master [RoseAna Twitchell](#).

### HOUSEHOLD HAZARDOUS WASTE EVENT



RRRASOC (Resource Recovery & Recycling Authority of Southwest Oakland County) is hosting a Household Hazardous Waste Event on **Saturday, October 6, 2012** at the **Novi Civic Center**, 45175 Ten Mile Road (between Novi Rd. and Taft).  
Event hours are **9:00 a.m. to 2:00 p.m.**

For a complete list acceptable items [CLICK HERE](#).

This event is open to residents of: Farmington, Farmington Hills, Lyon Township, Novi, Southfield, South Lyon, Walled Lake and Wixom.

### South Lyon Water Resources Public Input Survey

**Our Water. Our Future.**



We want to hear from you!

The City of South Lyon, in accordance with local watershed organizations, communities and counties, is collecting public input on our water resources in Southeast Michigan. Your opinions would be greatly appreciated!

Visit <https://www.surveymonkey.com/s/SEMIPPP> now to share your input.

Thanks for your participation!

### Yard Waste Pick-up



Summer's in full swing and yard work is calling! Compost/Yard Waste will be picked up on your regular trash day, from the **first full week of April through the end of November**.

Yard waste must be in brown paper bags or in trash cans labeled YARD WASTE. Stickers are available at City Hall front desk.

Please separate the yard waste materials from your regular trash by a few feet to ease pick up.

### Dog Licenses Available at City Hall



The new 2012 Oakland County dog tags have arrived! Dog tags and licenses are available at City Hall Monday through Friday, from 8:30 to 5:00. License Fees are as follows:





Spayed/Neutered Current \$7.50 Senior  
 Discount: Spayed/Neutered \$6.75

Male/Female (unaltered) \$15.00  
 Senior Discount: Male/Female (unaltered) \$13.50

**\*\*\*\*Delinquent (June 2nd) \$30.00\*\*\*\***  
 New Dog after July 10th \$3.75

You must present a copy of the your dog's Rabies Certificate (with Vet's signature) at the time of purchase. Payable by cash or check only.

**City Council Meetings Are Now Online**



City Council meetings are now **available online!** Videos will be uploaded within 2 days of a meeting. City Council meets on the 2nd and 4th Mondays of the month. **You can view the videos here.**

**Enjoy the Huron Valley Rail Trail**



The Huron Valley Trail connects with over 25 miles of paved trails in Island Lake Recreation Area and Kensington Metropark, plus additional paved trails in Wixom and South Lyon. It connects such varied destinations as Lyon Oaks County Park, Lyon Towne Center, the James F. Atchison Memorial Park, Downtown South Lyon, McHattie Park and Volunteer Park in South Lyon.

**Find out more about the Rail Trail here.**

**Meals on Wheels News!**



Join us for LUNCH at the Phase 1-4 CLUB HOUSE in Colonial Acres, South Lyon. The Western Oakland Meals on Wheels Program is pleased to offer a Senior Lunch Program for South Lyon Area residents.

Seniors 60 years of age and older \$3.00 per meal  
 Guests (under 60 yrs.) \$5.00 per meal

**Lunches are served on Wednesdays and Fridays at 12:00 noon.** \*\*To reserve your meal, please call the Nutrition Program at 810-632-2155

**(at least 24 HOURS IN ADVANCE).** For menus - visit our website [www.womow.org](http://www.womow.org) or call number above. For more information about making your reservation [click here](#). We look forward to serving you!

**Notary Services Available at City Hall**



The Clerk/Treasurer's office has two Notary Publics on staff to assist you with a variety of transactions. Hours daily, Monday through Friday 8:30 a.m. to 5:00 p.m. This service is free to City residents (living within our city limits). There is a \$5.00 fee for non-residents. Payment can be made by check or in cash.

For more information on these services call 248-437-1735.

**Veteran's Memorial Rock - Legacy Brick Program**



South Lyon's **VFW Post 2502** is inviting the public to purchase a Veteran's Memorial Legacy Brick Paver. These lasting memorials will be permanently and prominently placed on site at the Lovewell-Hill Post Veterans Memorial at the corner of Pontiac Trail and W. Liberty. The brick may be personalized with a special message remembering a fallen serviceman; honoring current or past members of our armed services or in honor of groups who have extended themselves meritoriously for the community.

If you are searching for that perfect birthday or anniversary gift for a family member or friend, consider purchasing a tax-deductible Legacy Brick Paver. You will be not only be supporting your local VFW, your gift will provide a heartfelt tribute to our men and women who dedicate their lives to keeping our freedom free. Your contribution helps support our troops and their families in Michigan.

[Brick Paver Order Form](#) (PDF)

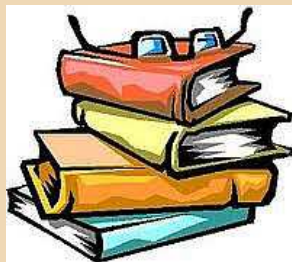
**Munetrix**

What is Munetrix?

Munetrix™ is a web based information source designed to give easy-to-understand access to sometimes confusing financial information for municipal governments. The tool allows for building long-term financial forecasts and trend analysis including fiscal indicator scores, best-practice benchmarking and peer group comparisons. Click on the icons below for more information on the City of South Lyon:



Opening the World Through Words...



...That's what you will be helping to do when you become a volunteer tutor with the Oakland Literacy Council. Since 1984 we have provided over 300 adults free one-on-one reading and English language instruction each year.

If you would like to experience the life-changing rewards of becoming a tutor, or if you know of anyone needing our help, please call the Oakland Literacy Council at (248) 253-1617 or email us at: [info@oaklandliteracy.net](mailto:info@oaklandliteracy.net). Make a difference in your community and someone's life!

**South Lyon City Hall**  
335 S. Warren Street  
South Lyon, MI 48178

Telephone: (248) 437-1735 / Fax: (248) 486-0049

Banner photos were generously provided by Phil Taylor, [Sharpe Contrast Photography](#).

[United States](#) ▶ [Michigan](#) ▶ [01 SEMCOG](#) ▶ [Oakland County](#) ▶ [South Lyon](#)

Name	Type	Fiscal Year End	Population 2010	Phone	Website
<a href="#">South Lyon</a>	City	June	11,327	(248) 437-1735	<a href="http://www.southlyonmi.org">http://www.southlyonmi.org</a>

**Multi-year General Fund Data for South Lyon**

[Follow South Lyon on:](#) ▾

Year	Data Status	Fiscal Indicator Score (4)	Population (3)	Operating Millage (2)	General Fund Balance (1)	Governmental Activities Long Term Debt (1)	General Fund Revenues (1)	General Fund Expenditures (1)	Taxable Value (2)
<a href="#">2014</a>	Forecast	2	11,327	11.25000	\$3,289,851	\$781,851	\$4,836,984	\$4,875,609	\$307,317,686
<a href="#">2013</a>	Budget	1	11,327	11.25000	\$3,328,477	\$1,000,239	\$4,854,684	\$4,851,042	\$307,317,686
<a href="#">2012</a>	Audited	2	11,327	11.25000	\$3,421,720	\$1,214,554	\$4,905,301	\$4,932,738	\$310,516,272
<a href="#">2011</a>	Historic	2	11,327	11.25000	\$3,449,157	\$1,578,893	\$4,903,081	\$4,674,595	\$311,296,730
<a href="#">2010</a>	Historic	3	11,327	11.25000	\$3,235,671	\$1,674,777	\$5,089,579	\$4,934,705	\$329,601,120
<a href="#">2009</a>	Historic	3	10,994	11.25000	\$3,095,797	\$2,505,884	\$5,100,009	\$5,100,012	\$362,812,480
<a href="#">2008</a>	Historic	3	10,959	13.75000	\$3,125,909	\$2,985,408	\$5,536,528	\$5,748,542	\$401,329,860
<a href="#">2007</a>	Historic	1	10,996	13.75000	\$3,337,923	\$2,852,523	\$5,091,078	\$4,877,972	\$406,801,690
<a href="#">2006</a>	Historic	2	10,036	13.75000	\$3,124,817	\$3,248,027	\$4,826,081	\$4,674,542	\$396,002,160

[United States](#) ▶ [Michigan](#) ▶ [01 SEMCOG](#) ▶ [Oakland County](#) ▶ [South Lyon](#) ▶ **2014**

Revenue Categories	All Fund Types	Expense Categories	All Fund Types	Comments	Auditing Procedures Report	Value
Federal		Police Cost	\$2,382,732	Internal	Population	11,327
State Revenue Sharing	\$857,540	Fire Cost	\$536,019	Volunteer	General Fund Revenues	\$4,836,984
State (Other)	\$692,403	General Government	\$1,003,400		General Fund Expenditures	\$4,875,609
Other Local Gov'ts		Public Works	\$1,737,526		Fund Balance	\$3,289,851
Personal Income Tax		Health & Welfare			Taxable Value	\$307,317,686
Property Taxes	\$3,331,144	Community & Economic Development	\$38,750		Major Fund Deficit	
Other Taxes		Recreation & Culture	\$145,925		Governmental Activities Long-term Debt	\$781,851
<b>SUB TOTAL</b>	<b>\$4,881,087</b>	Library			Indicator Score	2
Licenses & Permits	\$52,000	Other			<b>Debt &amp; Equity</b>	
Utilities		Utilities	\$2,777,769			
Sewage & Trash		Debt Service	\$356,810		Undesignated Fund Balance	
		Capital Outlay	\$100,000		Designated Fund Balance	
Parks and recreation					Reserved Fund Balance	
Hospitals		<b>TOTAL EXPENSES</b>	<b>\$9,078,931</b>		Total Cash & Investments	
Other Services	\$2,882,900	Transfers In	\$91,800			
		Transfers Out	\$91,800		Total Debt	
<b>TOTAL REVENUE FROM SERVICES</b>	<b>\$2,934,900</b>	<b>Compensation</b>			<b>Unfunded Liabilities</b>	
Net Interest & Investment Income	\$95,000					
Employee Pensions		Pensioners			Pensions Actuarial Liability	
Other Revenues	\$292,800	Headcount (FTE)			Pension Fund Assets	
<b>TOTAL OTHER REVENUES</b>	<b>\$387,800</b>	Benefits			OPEB Actuarial Liability	
<b>TOTAL REVENUES</b>	<b>\$8,203,787</b>	Wages			OPEB Fund Assets	
Assumptions	The assumptions made for the 2014 budget forecast were based on taxable values, rate of inflation and revenue sharing.					



[United States](#) ▶ [Michigan](#) ▶ [01 SEMCOG](#) ▶ [Oakland County](#) ▶ [South Lyon](#) ▶ **2013**

Revenue Categories	All Fund Types	Expense Categories	All Fund Types	Comments	Auditing Procedures Report	Value
Federal	\$82,156	Police Cost	\$2,382,226	Internal	Population	11,327
State Revenue Sharing	\$857,540	Fire Cost	\$465,250	Volunteer	General Fund Revenues	\$4,854,684
State (Other)	\$546,478	General Government	\$1,026,400		General Fund Expenditures	\$4,851,042
Other Local Gov'ts		Public Works	\$1,775,726		Fund Balance	\$3,328,477
Personal Income Tax		Health & Welfare	\$2,575		Taxable Value	\$307,317,686
Property Taxes	\$3,299,824	Community & Economic Development	\$38,750		Major Fund Deficit	
Other Taxes		Recreation & Culture	\$160,925		Governmental Activities Long-term Debt	\$1,000,239
<b>SUB TOTAL</b>	<b>\$4,785,998</b>	Library			Indicator Score	1
Licenses & Permits	\$52,000	Other	\$63,816		<b>Debt &amp; Equity</b>	
Utilities		Utilities	\$2,785,769			
Sewage & Trash		Debt Service	\$365,917		Undesignated Fund Balance	
		Capital Outlay			Designated Fund Balance	
Parks and recreation					Reserved Fund Balance	
Hospitals		<b>TOTAL EXPENSES</b>	<b>\$9,067,354</b>		Total Cash & Investments	
Other Services	\$2,790,470	Transfers In	\$109,500			
		Transfers Out	\$109,500		Total Debt	
<b>TOTAL REVENUE FROM SERVICES</b>	<b>\$2,842,470</b>	<b>Compensation</b>			<b>Unfunded Liabilities</b>	
Net Interest & Investment Income	\$100,000					
Employee Pensions		Pensioners			Pensions Actuarial Liability	
Other Revenues	\$201,000	Headcount (FTE)	<b>44</b>		Pension Fund Assets	
<b>TOTAL OTHER REVENUES</b>	<b>\$301,000</b>	Benefits			OPEB Actuarial Liability	
<b>TOTAL REVENUES</b>	<b>\$7,929,468</b>	Wages			OPEB Fund Assets	
Notes						

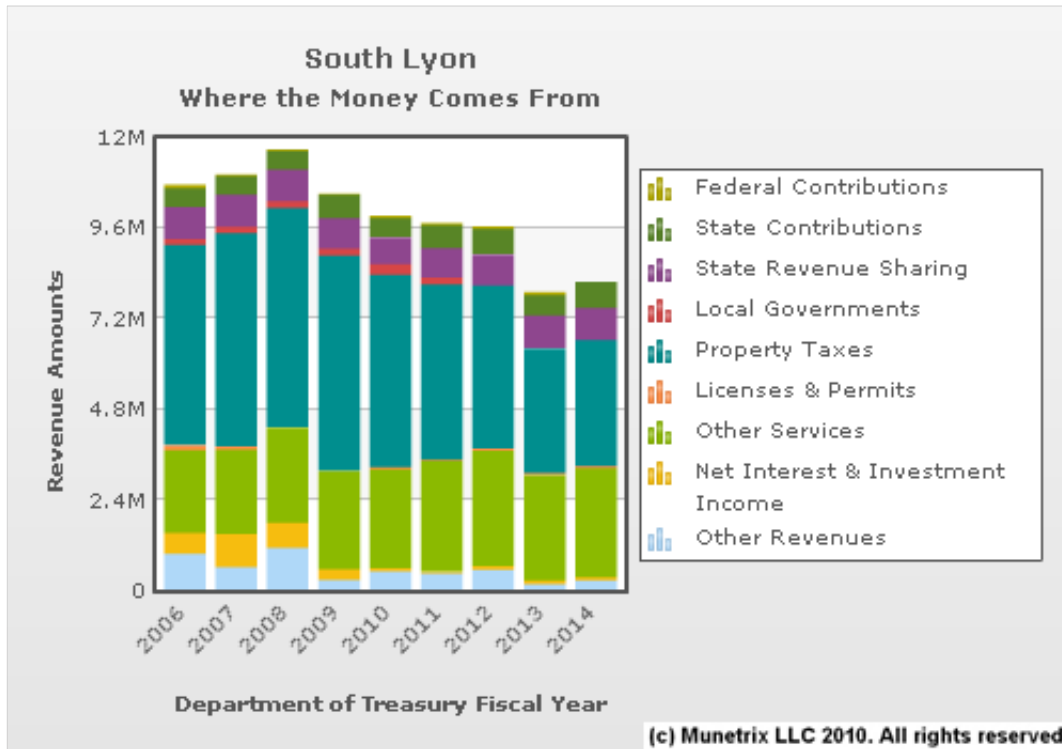
[United States](#) ▶ [Michigan](#) ▶ [01 SEMCOG](#) ▶ [Oakland County](#) ▶ [South Lyon](#) ▶ **2012**

Revenue Categories	All Fund Types	Expense Categories	All Fund Types	Comments	Auditing Procedures Report	Value
Federal	\$77,303	Police Cost	\$2,219,785	Internal	Population	11,327
State Revenue Sharing	\$823,321	Fire Cost	\$464,211	Volunteer	General Fund Revenues	\$4,905,301
State (Other)	\$675,269	General Government	\$1,019,971		General Fund Expenditures	\$4,932,738
Other Local Gov'ts		Public Works	\$1,784,570		Fund Balance	\$3,421,720
Personal Income Tax		Health & Welfare			Taxable Value	\$310,516,272
Property Taxes	\$4,311,229	Community & Economic Development	\$61,138		Major Fund Deficit	
Other Taxes		Recreation & Culture	\$273,178		Governmental Activities Long-term Debt	\$1,214,554
<b>SUB TOTAL</b>	<b>\$5,887,122</b>	Library			Indicator Score	2
Licenses & Permits	\$58,297	Other			<b>Debt &amp; Equity</b>	
Utilities		Utilities	\$3,656,237			
Sewage & Trash		Debt Service	\$597,193		Undesignated Fund Balance	\$6,215,143
		Capital Outlay	\$71,731		Designated Fund Balance	\$2,727,219
Parks and recreation					Reserved Fund Balance	\$6,819,161
Hospitals		<b>TOTAL EXPENSES</b>	<b>\$10,148,014</b>		Total Cash & Investments	\$9,936,498
Other Services	\$3,047,195	Transfers In	\$88,768			
		Transfers Out	\$88,768		Total Debt	\$14,177,379
<b>TOTAL REVENUE FROM SERVICES</b>	<b>\$3,105,492</b>	<b>Compensation</b>			<b>Unfunded Liabilities</b>	
Net Interest & Investment Income	\$108,093					
Employee Pensions		Pensioners			Pensions Actuarial Liability	\$10,402,369
Other Revenues	\$575,339	Headcount (FTE)			Pension Fund Assets	\$7,824,778
<b>TOTAL OTHER REVENUES</b>	<b>\$683,432</b>	Benefits			OPEB Actuarial Liability	\$874,581
<b>TOTAL REVENUES</b>	<b>\$9,676,046</b>	Wages			OPEB Fund Assets	
Notes						

### Debt per Capita

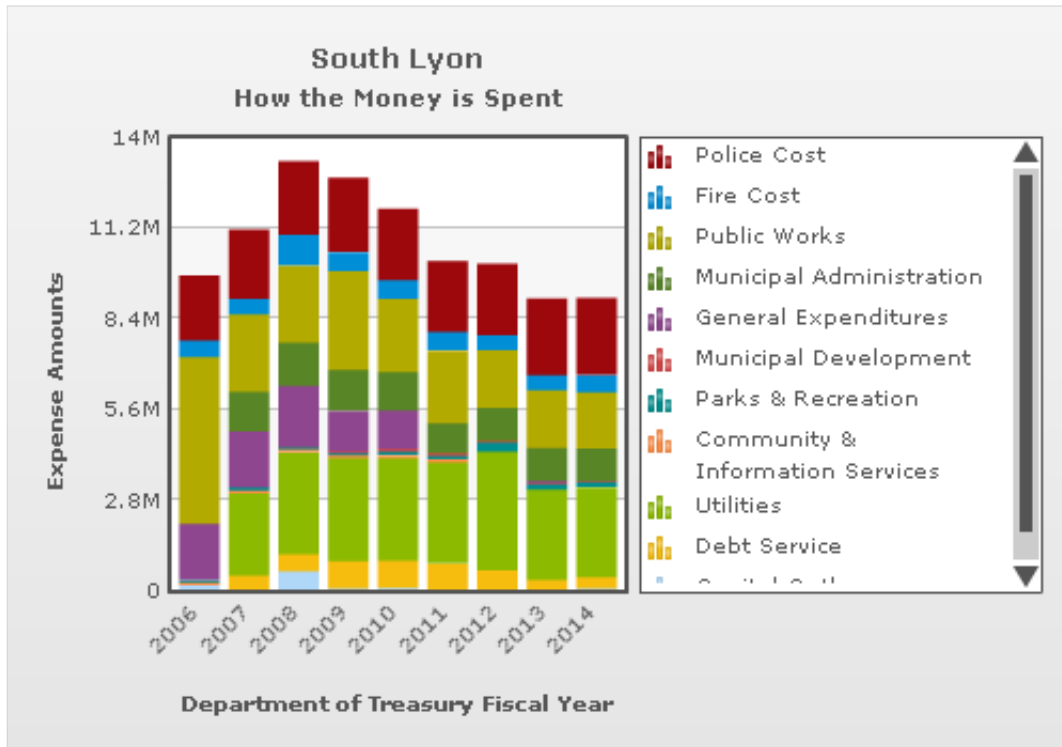
Debt Item	2006	2007	2008	2009	2010	2011	2012	2013	2014
Bonds & contracts payable	\$248	\$201	\$175	\$146	\$112	\$82	\$73	\$64	\$54
Capital leases	\$0	\$0	\$0	\$0	\$0	\$0	\$0	\$0	\$0
Other contractual debt	\$39	\$27	\$73	\$55	\$36	\$27	\$18	\$12	\$6
	<b>\$287</b>	<b>\$228</b>	<b>\$248</b>	<b>\$201</b>	<b>\$148</b>	<b>\$109</b>	<b>\$91</b>	<b>\$76</b>	<b>\$60</b>

Debt Item	2006	2007	2008	2009	2010	2011	2012	2013	2014
Employee compensated absences	\$36	\$31	\$25	\$28	\$29	\$31	\$27	\$0	\$0
Landfill closure & postclosure care	\$0	\$0	\$0	\$0	\$0	\$0	\$0	\$0	\$0
Uninsured losses	\$0	\$0	\$0	\$0	\$0	\$0	\$0	\$0	\$0
Other claims & contingencies	\$0	\$0	\$0	\$0	\$0	\$0	\$0	\$0	\$0
Debt Item	2006	2007	2008	2009	2010	2011	2012	2013	2014
Total Long-term debt	\$323	\$259	\$273	\$229	\$177	\$140	\$118	\$76	\$60



**Why it Matters:** Revenue is generated from the tax dollars we receive from residents and businesses which are generated from our millage rate multiplied by property valuations. Revenue is also generated from other sources such as State and Federal grants, permits, fees, water and sewer charges, parking fees and citations. (n036)

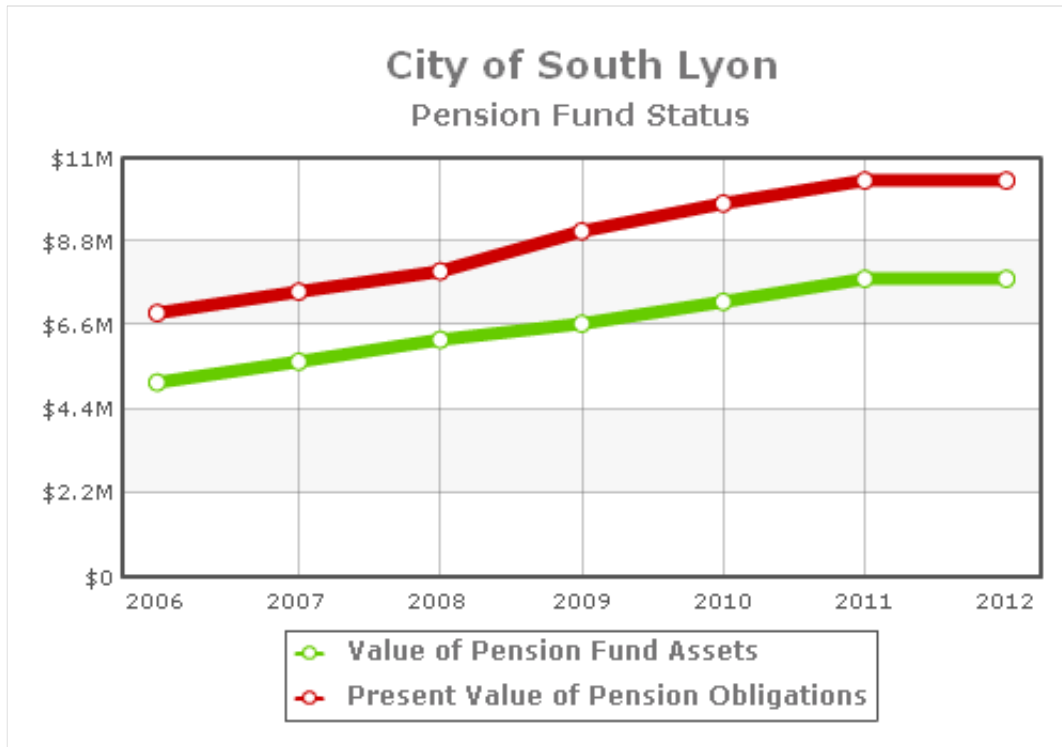
**Notes About the Data:** Historical Revenue & Expense data has been loaded from the F65 forms that each municipality files with the State of Michigan and includes all fund types: **General Fund, Other Government Funds, Enterprise and Component Unit** . Current & Future Year data is loaded from the community's own budget or forecast projections and typically only include: **General and other Governmental Funds**. (n016)



**Why it Matters:** Just like you, expenses pay the bills. As a service provider for the community, expenses cover the costs associated with running the government and keeping the city clean, safe and to maintain the quality of life we enjoy as residents. (n037)

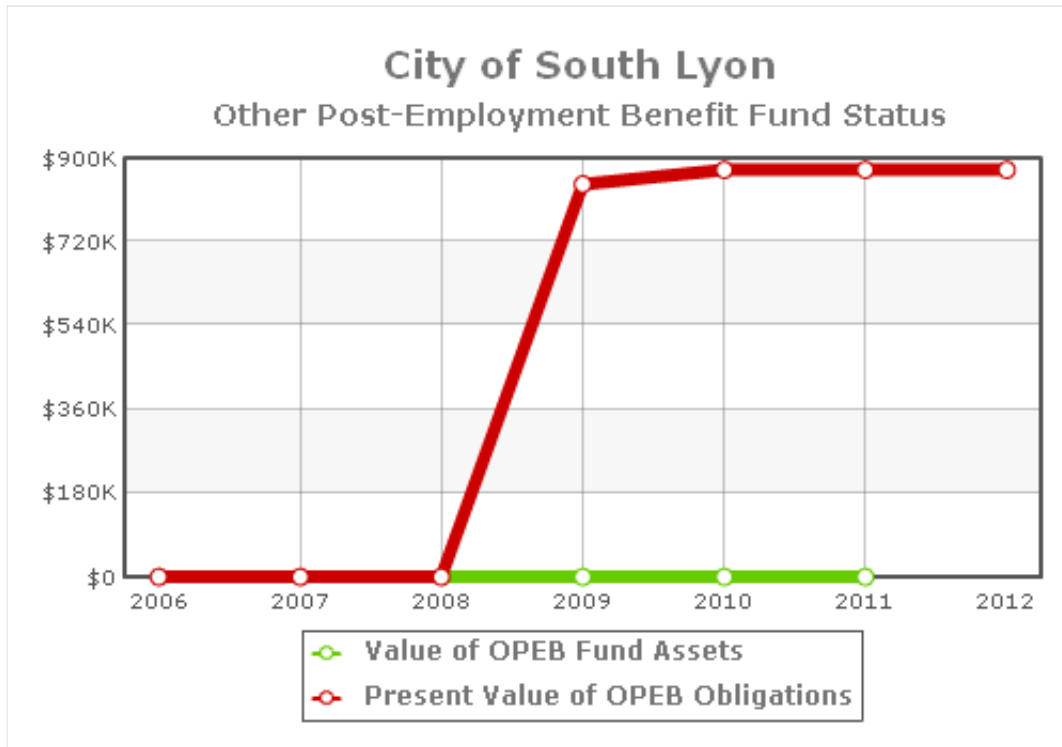
**Notes About the Data:** Historical Revenue & Expense data has been loaded from the F65 forms that each municipality files with the State of Michigan and includes all fund types: **General Fund, Other Government Funds, Enterprise and Component Unit**. Current & Future Year data is loaded from the community's own budget or forecast projections and typically only include: **General and other Governmental Funds**. (n016)





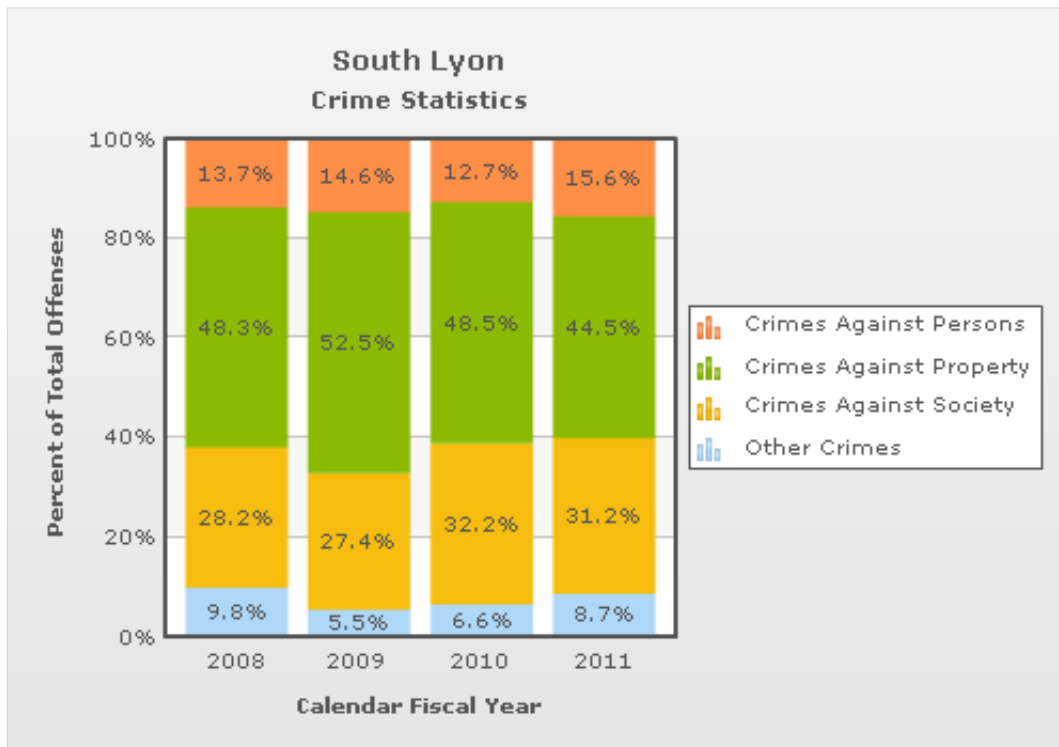
**Why it Matters:** Unfunded pensions and unfunded retiree health care as shown here are determined based on actuarial assessments of asset values and long-term liabilities. Even a "fully-funded" pension system according to annual required contributions (ARC) could be underfunded in a given year, depending on market conditions. (n031)

**Notes About the Data:** This information is generally found in the footnote disclosures of your municipality's annual financial statements; it is also available in your community's actuarial valuations. (n033)



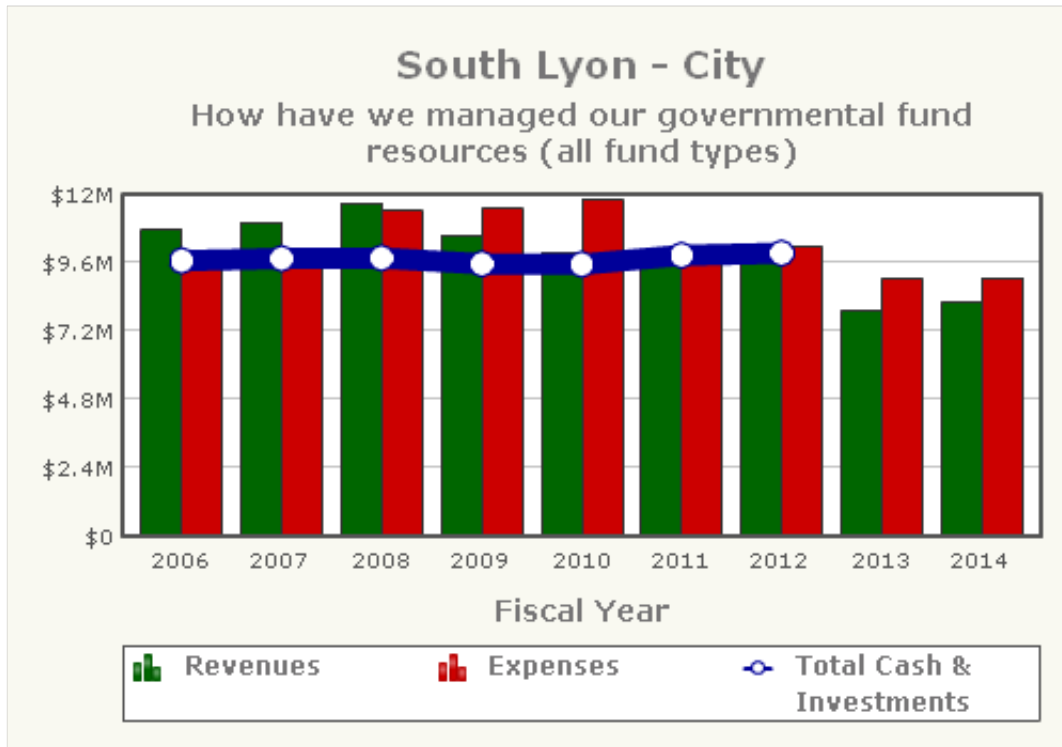
**Why it Matters:** Unfunded pensions and unfunded retiree health care as shown here are determined based on actuarial assessments of asset values and long-term liabilities. Even a "fully-funded" pension system according to annual required contributions (ARC) could be underfunded in a given year, depending on market conditions. (n031)

**Notes About the Data:** This information is generally found in the footnote disclosures of your municipality's annual financial statements; it is also available in your community's actuarial valuations. (n033)



**Why it Matters:** Crime statistics are used by different groups for different things. On a political level, it provides a measure for the success or failure of certain criminal justice policies. On an operational level, it provides important information on how best to allocate municipal resources. From a civil society perspective, it provides indicators against which to measure criminal justice performance and therefore an important tool to hold accountability the various role-players in the criminal justice system (Institute for Security Studies). (n035)

**Notes About the Data:** The crime data presented has been loaded from the Michigan Incident Crime Reporting summary from the Michigan State Police website. This data has been collected from participating law enforcement agencies throughout the state. (n034)



**Why it Matters:**The "How we have managed..." graph displays the impact of Total Revenues and Total Expenses on Total Cash and Investments. The graph uses data from the F65 reports and includes all fund types. (n014)

**Notes About the Data:** Historical Revenue & Expense data has been loaded from the F65 forms that each municipality files with the State of Michigan and includes all fund types: **General Fund, Other Government Funds, Enterprise and Component Unit** . Current & Future Year data is loaded from the community's own budget or forecast projections and typically only include: **General and other Governmental Funds**. (n016)



## Dashboard For City of South Lyon

[View details in the Citizens' Guide](#)

<b>Fiscal Stability</b>			
	FY 2011	FY 2012	Progress
Annual General Fund expenditures per capita	\$413	\$435	↓
Fund balance as % of annual General Fund expenditures	73.8%	69.4%	↓
Other Post Employment Benefits % Funded	0%	0%	↔
Pension % Funded	75.2%	75.2%	↔
Debt burden per capita	\$1,337	\$1,252	↑
<b>Public Safety</b>			
	2010	2011	Progress
Crimes against persons per thousand residents	5.7	4.8	↑
Crimes against property per thousand residents	21.5	13.6	↑
Crimes against society per thousand residents	14.3	9.5	↑
Other crimes per thousand residents	2.9	2.6	↑
Traffic crashes non-injury	104	120	↓
Traffic crashes injuries or fatalities	22	27	↓
<b>Quality of Life</b>			
	FY 2011	FY 2012	Progress
Acres of park per thousand residents	13.5%	13.5%	↔
Percent of General Fund budget committed to arts culture and recreation	2.1%	5.5%	↑
<b>School District Enrollment</b>			
	2010	2011	Progress
South Lyon Community Schools	7,058	7,065	↑