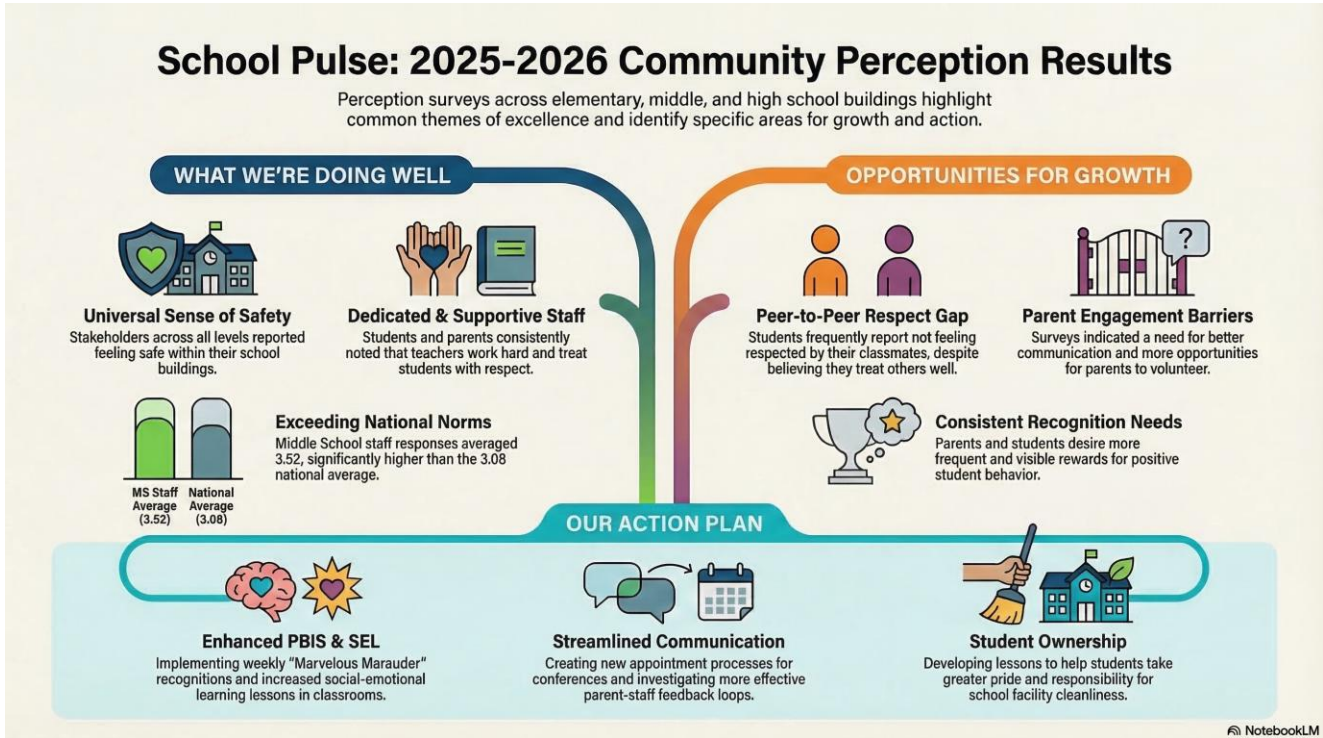


# Ovid-Elsie Area Schools

## 2025–2026 School Climate Survey

### District Summary Report



## District Overview

The 2025–2026 Ovid-Elsie School Climate Survey was administered across four buildings: the High School, Middle School, E.E. Knight Elementary, and Leonard Elementary. A total of 740 responses were collected from staff, students, and families. This report presents findings organized by respondent group, highlighting key strengths and areas for continued growth across the district.

Note: Leonard Elementary did not administer a student survey. E.E. Knight's student survey used a frequency-based response scale (Always/Often/Sometimes/Never) rather than an agreement scale, and was designed for younger learners with a shorter question set.

Category	Staff (n=70)	Students (n=442)	Families (n=228)
Belonging / Connection	91%	72%	85%
Academic Climate	89%	75%	77%
Safety	73%	71%	82%
Physical Environment	90%	77%†	86%
Peer Relations / Equity	84%	62%	76%
Family Engagement	66%	—	79%

† Physical Environment data available for High School and Middle School students only. Student percentages are weighted averages across all buildings with comparable survey items.