

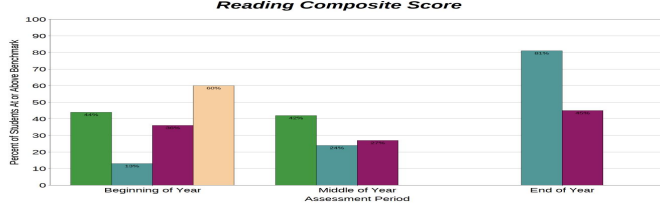
MDE Learning Loss Grant (98c) Achievement & Planning Overview

Mid Peninsula Board of Education Presentation
October 17, 2022

Section 98c Learning Loss Grant Overview

- Appropriates \$52,056,000 as part of Governor's Education Relief (GEER) and part of the federal Elementary and Secondary School Emergency Relief (ESSER) II Fund.
- Goal: address student learning loss in the LEA.
- Overlaps existing dollars allocated to support learning loss, with a tighter timeline.
 - Must be expended by June 30, 2023.
- Estimated allocation is \$35 - \$50 per student.

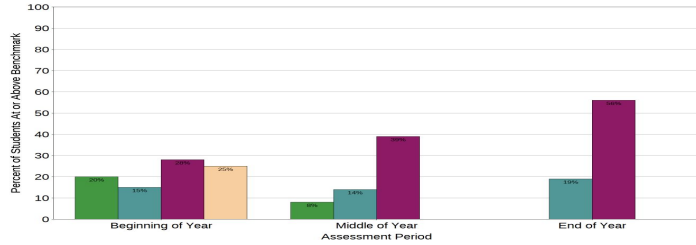
Kindergarten



2019-2020	Beginning of Year: 44% (7 of 16)
	Middle of Year: 42% (8 of 19)
	End of Year: 0% (0 of 0)
2020-2021	Beginning of Year: 13% (2 of 16)
	Middle of Year: 24% (4 of 17)
	End of Year: 81% (13 of 16)
2021-2022	Beginning of Year: 39% (4 of 11)
	Middle of Year: 44% (3 of 11)
	End of Year: 35% (2 of 6)
2022-2023	Beginning of Year: 60% (6 of 10)
	Middle of Year: 0% (0 of 0)
	End of Year: 0% (0 of 0)

1st Grade

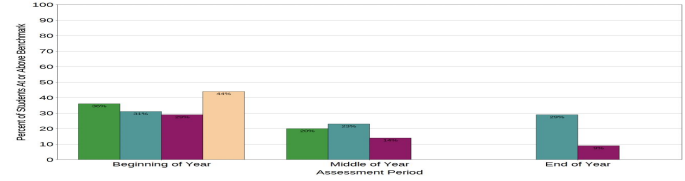
Reading Composite Score



2019-2020	Beginning of Year: 20% (2 of 10)
	Middle of Year: 8% (1 of 12)
	End of Year: 0% (0 of 0)
2020-2021	Beginning of Year: 15% (3 of 20)
	Middle of Year: 14% (3 of 21)
	End of Year: 19% (4 of 21)
2021-2022	Beginning of Year: 28% (5 of 18)
	Middle of Year: 39% (7 of 18)
	End of Year: 19% (10 of 18)
2022-2023	Beginning of Year: 25% (2 of 8)
	Middle of Year: 0% (0 of 0)
	End of Year: 0% (0 of 0)

2nd Grade

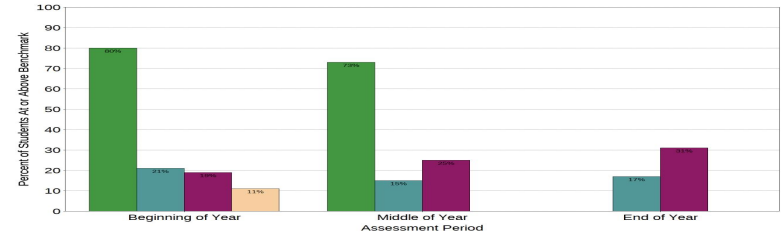
Reading Composite Score



2019-2020	Beginning of Year: 36% (5 of 14)
	Middle of Year: 25% (3 of 12)
	End of Year: 0% (0 of 0)
2020-2021	Beginning of Year: 31% (4 of 13)
	Middle of Year: 31% (5 of 16)
	End of Year: 31% (4 of 13)
2021-2022	Beginning of Year: 29% (8 of 27)
	Middle of Year: 29% (8 of 27)
	End of Year: 29% (8 of 27)
2022-2023	Beginning of Year: 44% (7 of 16)
	Middle of Year: 0% (0 of 0)
	End of Year: 0% (0 of 0)

3rd Grade

Reading Composite Score



2019-2020	Beginning of Year: 80% (8 of 10)
	Middle of Year: 73% (8 of 11)
	End of Year: 0% (0 of 0)
2020-2021	Beginning of Year: 21% (3 of 14)
	Middle of Year: 15% (2 of 13)
	End of Year: 17% (2 of 12)
2021-2022	Beginning of Year: 19% (3 of 16)
	Middle of Year: 20% (4 of 16)
	End of Year: 31% (5 of 16)
2022-2023	Beginning of Year: 11% (2 of 19)
	Middle of Year: 0% (0 of 0)
	End of Year: 0% (0 of 0)

Acadience Proficiency, by grade level from 2019-2022

Implications, Conclusions & Hypotheses:

- Students in younger grades appear to recover from learning loss impact more quickly than students in upper elementary grades.
- Specific learning loss patterns are not obvious.
- Our approach: continue to lean on our successful MTSS system.
 - Benchmark assessments 3x/year. Continual adjustment of intervention groups to offer targeted student support based on individual student need.
 - Progress monitoring every 2 weeks for all students receiving Tier 2 intervention.
 - Refer to Tier 3 for students not making progress.

MDE Learning Loss Grant (98c) Plan:

Existing Learning Loss Initiatives:

- Title VI and I funds:
 - Tutoring, daily after school
- ESSER:
 - Intervention support, behavior & academic

98c Plans:

- Elementary and Middle School Interventionists
 - Maintain 3 paraprofessionals as instructional interventionists to help provide Tier 2 remediation.
 - Classroom support in elementary for small group reading blocks.
- Literacy best practice materials and training.
- Elementary math individualization and remediation resources.